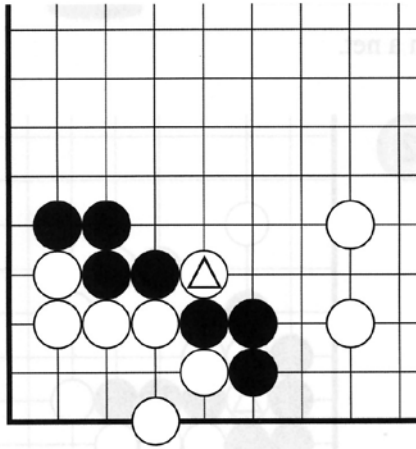


4. Net

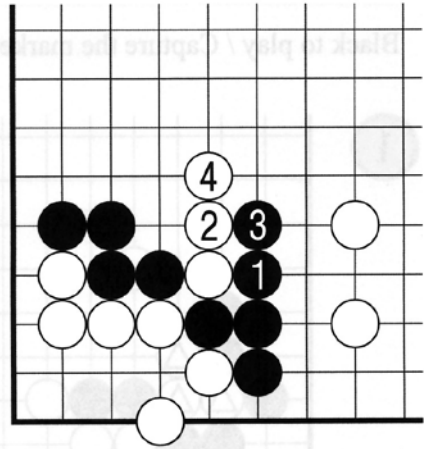
The net is one of the capturing methods. Taking into consideration the surrounding position, let's study the net in more detail.

Dia.1



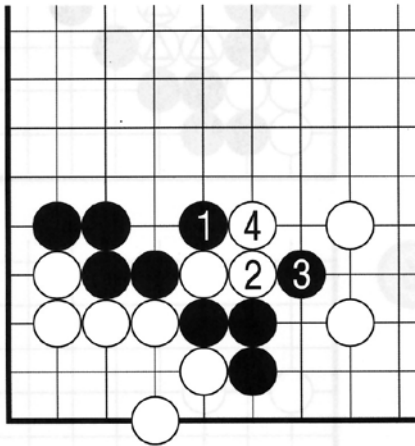
Dia.1 Capture the marked stone with a net.

Dia.2



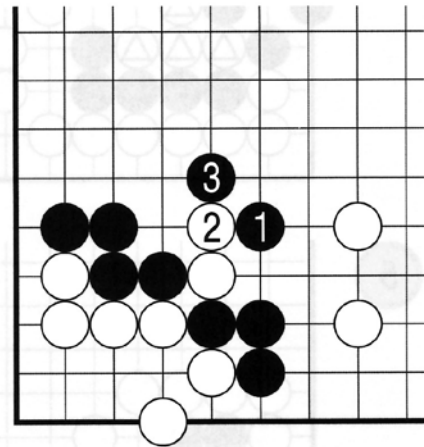
Dia.2 Black 1 is not successful.

Dia.3



Dia.3 The ladder with 1 doesn't work in this case.

Dia.4



Dia.4 Black 1 is correct. If White plays at 2, Black captures the stones with 3.

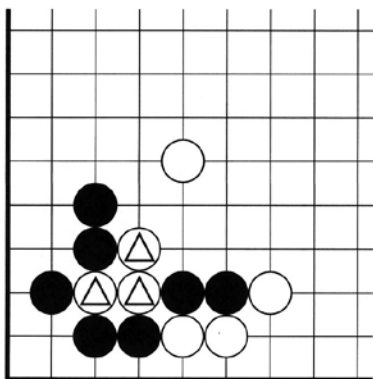


4. Net

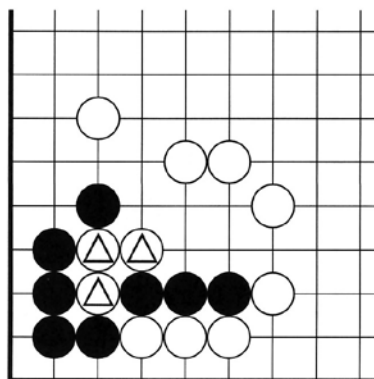


Black to play / Capture the marked stones with a net.

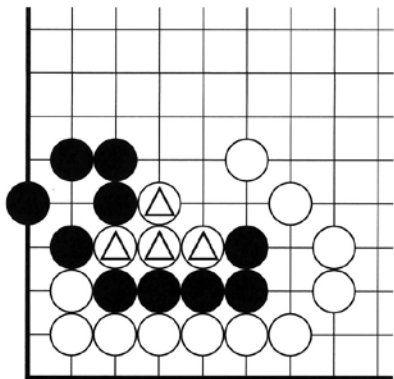
1



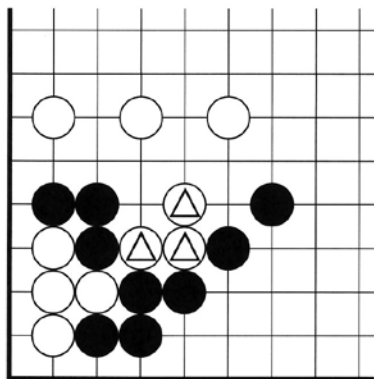
2



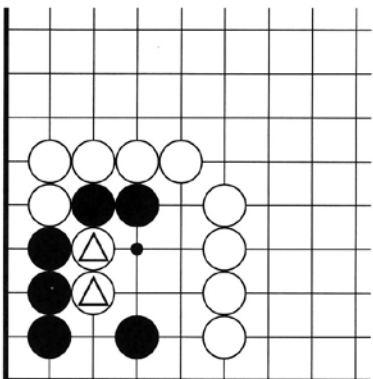
3



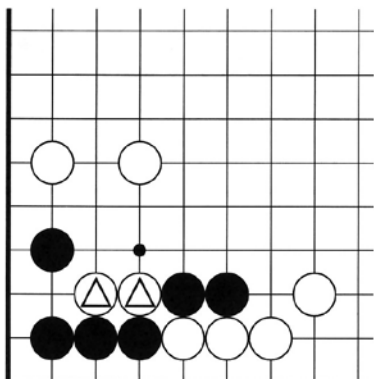
4



5



6



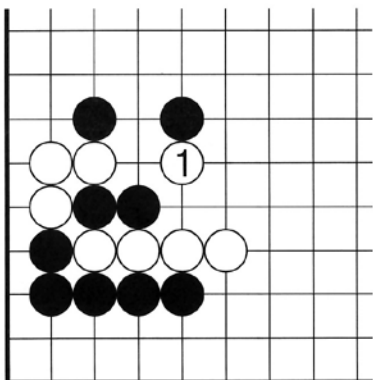


4. Net

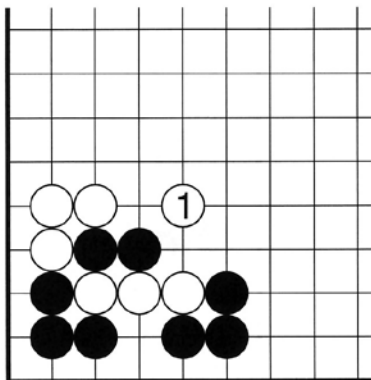


White has played the net with 1. Escape the Black stones.

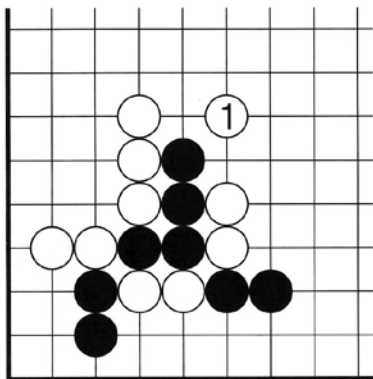
7



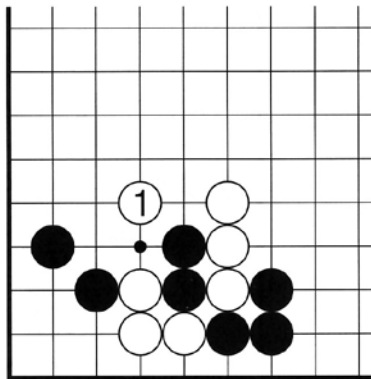
8



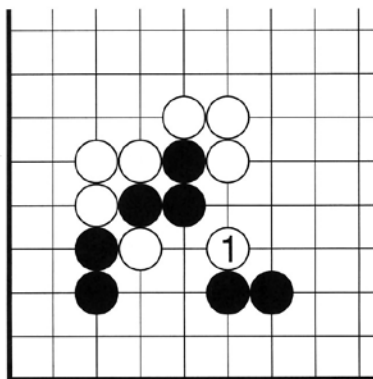
9



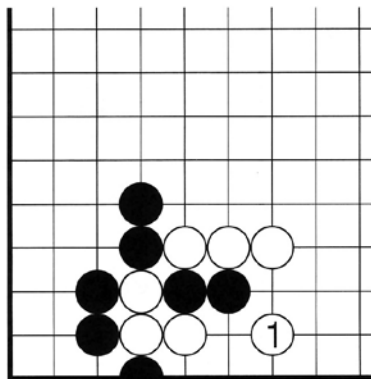
10



11



12



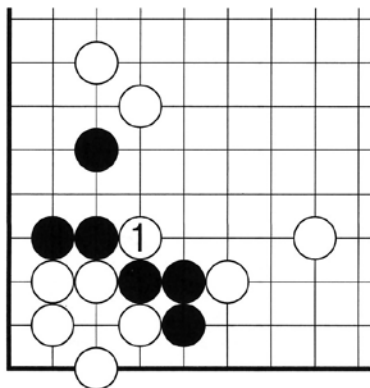


4. Net

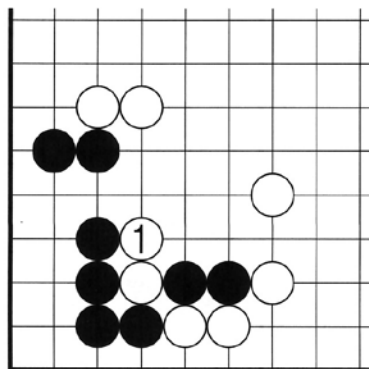


White has played at 1. Capture the White stone(s) with a net.

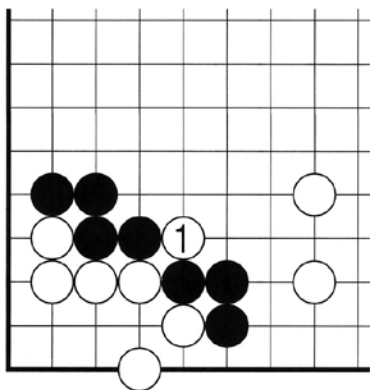
13



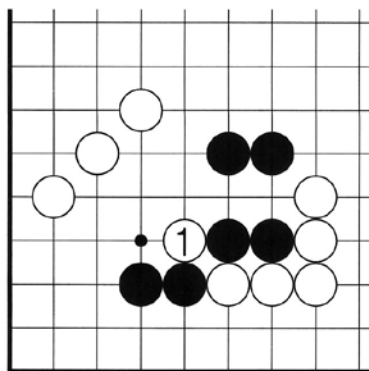
14



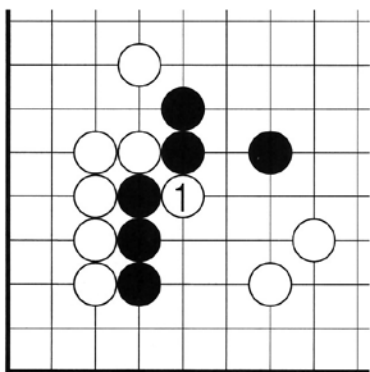
15



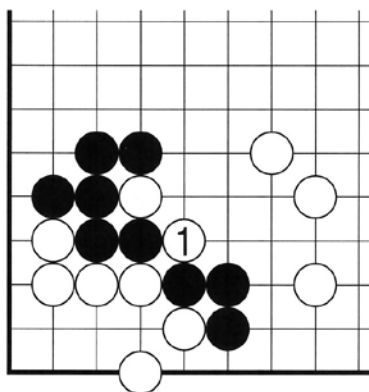
16



17



18



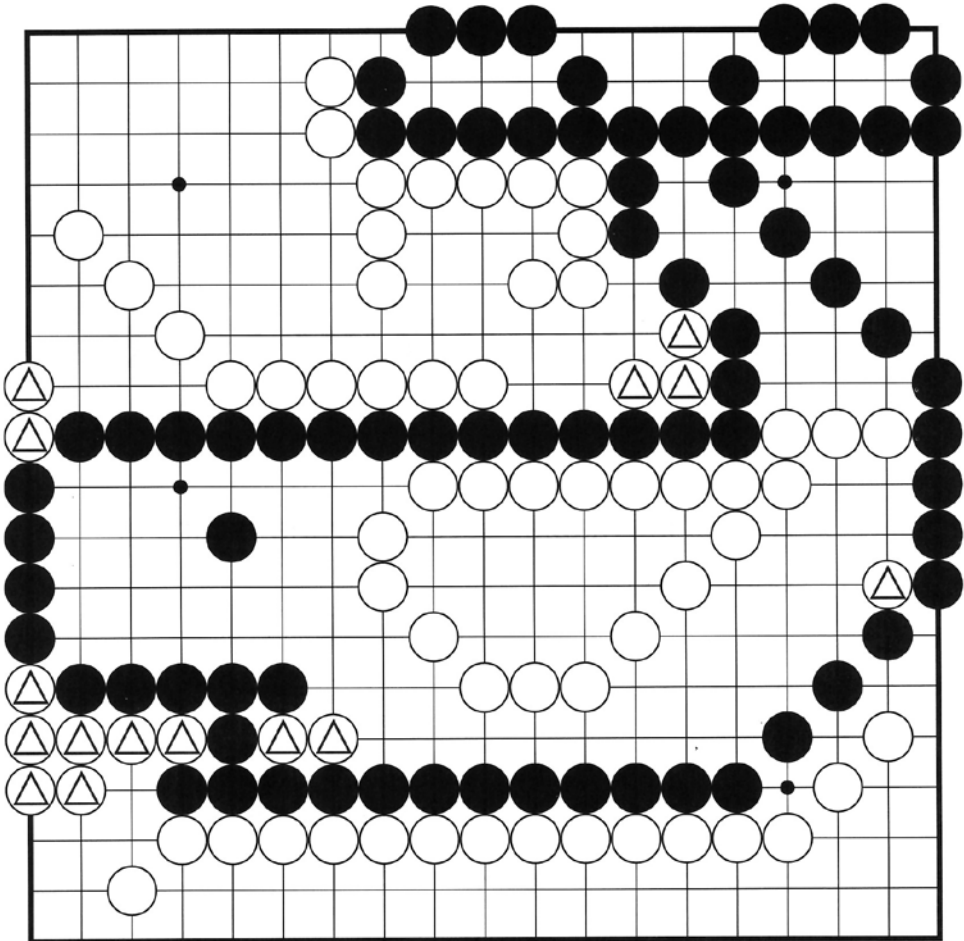


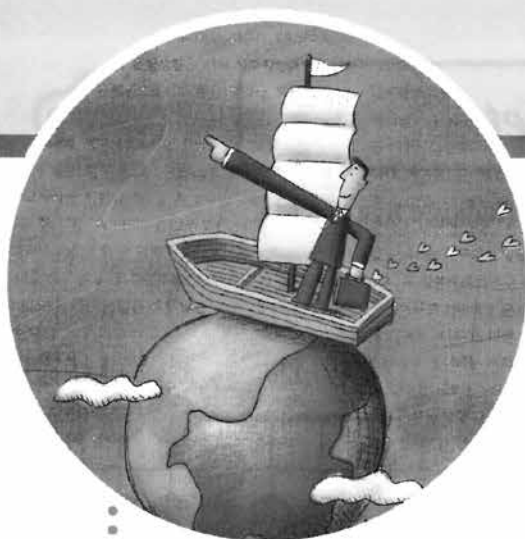
4. Net



Capture the marked stones with a net. (Indicate five places.)

19





5. Capturing race

In the middle game, capturing races are almost inevitable. Let's study the tactics of capturing races.

5-1 Basic tactics

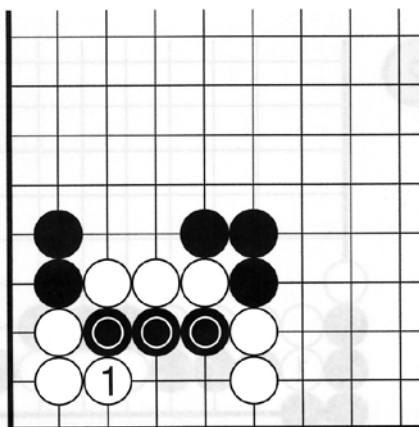
5-2 Fill the outside liberty first

5-3 Fill the liberty of the main chain

5-4 With which group to fight?

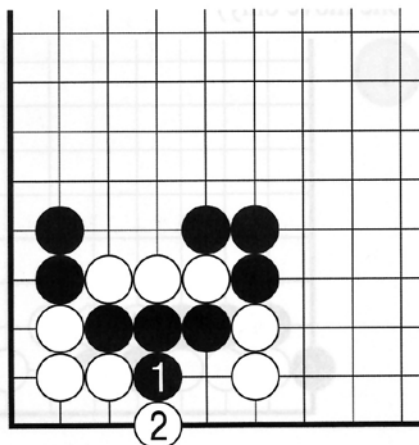
5-1 Basic tactics

Dia.1



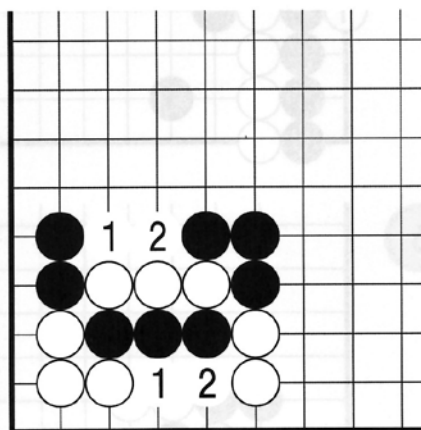
Dia.1 After White 1, is the marked Black chain alive or dead?

Dia.2



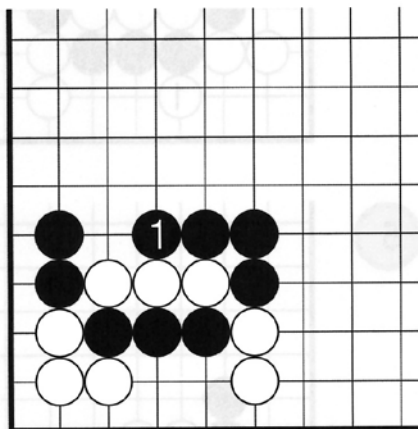
Dia.2 If Black plays at 1, White captures the Black chain with 2.

Dia.3



Dia.3 Now we know that this is a capturing race with each side having two liberties.

Dia.4



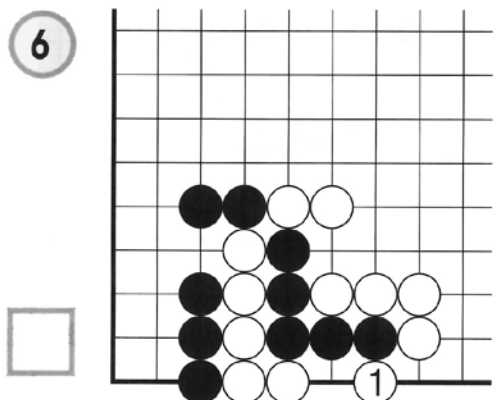
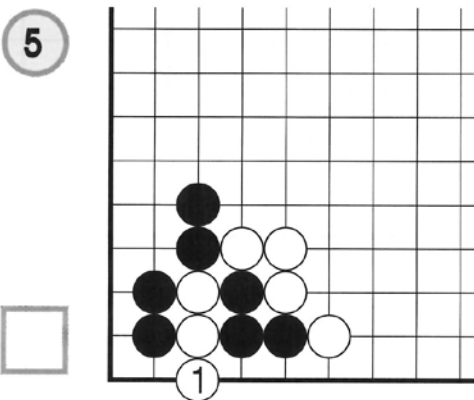
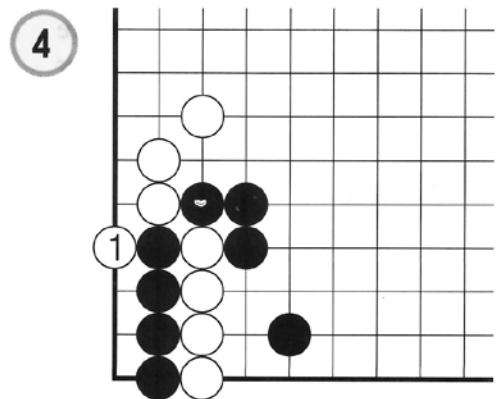
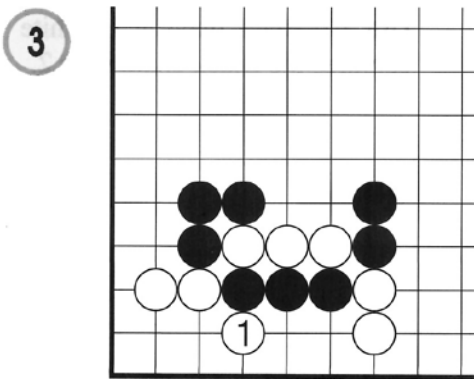
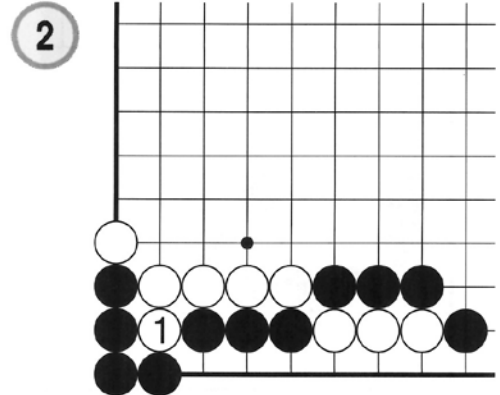
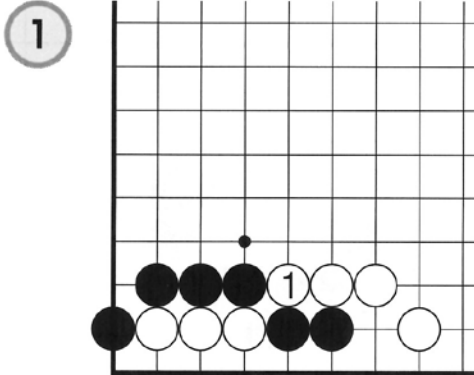
Dia.4 Therefore, if Black fills a liberty with 1, Black can capture the White chain.



5-1. Basic tactics



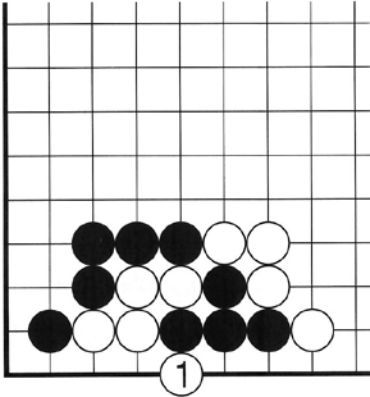
White played at 1. Choose the correct answer to win the capturing race. (Indicate one move only)



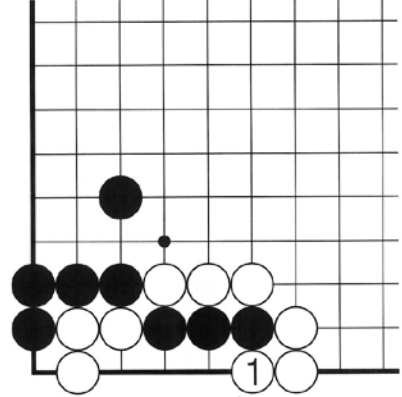


White played at 1. Choose the correct answer to win the capturing race. (Indicate one move only)

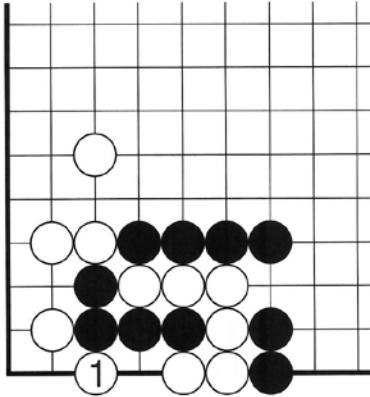
7



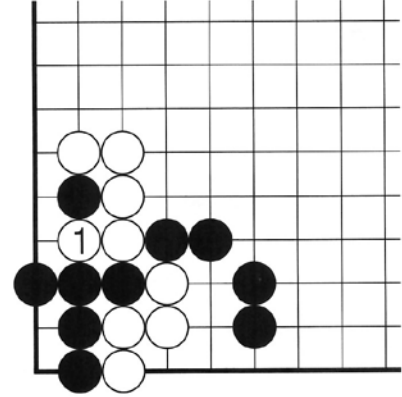
8



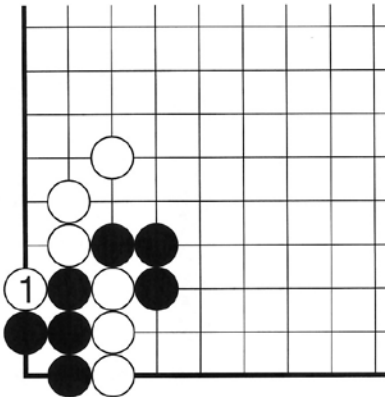
9



10



11



12

