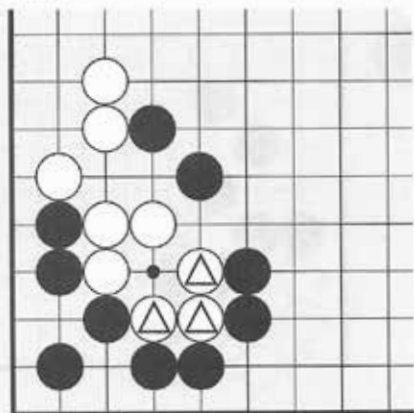


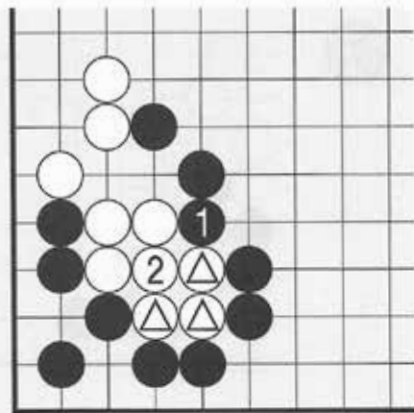
1-7 Snapback after Dansu (Atari)

• Dia.1 •



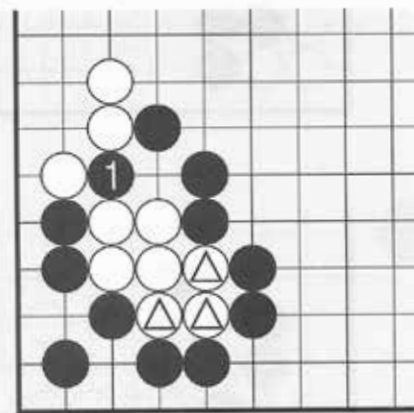
Dia.1 Let's study how to capture the marked stones!

• Dia.2 •



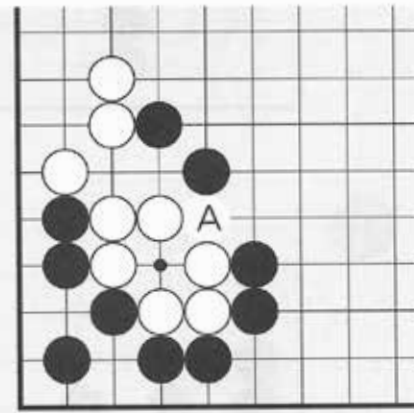
Dia. 2 Black 1 is correct here.

• Dia.3 •



Dia.3 Then, Black captures the White group with a snapback.

• Dia.4 •

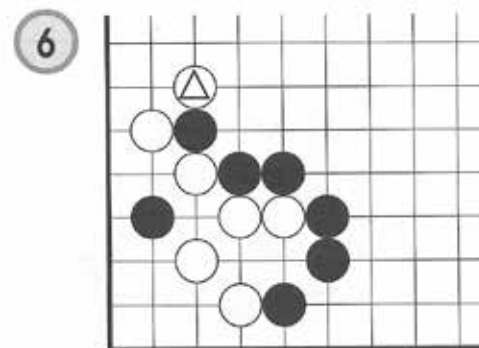
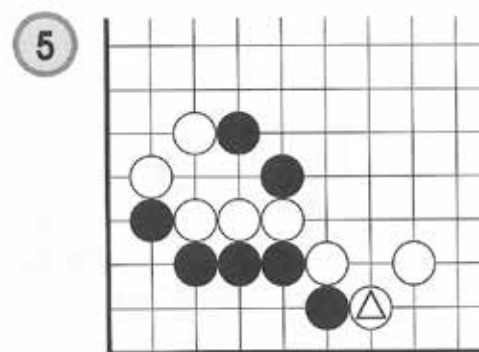
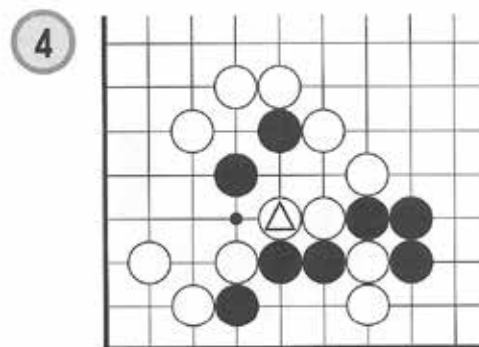
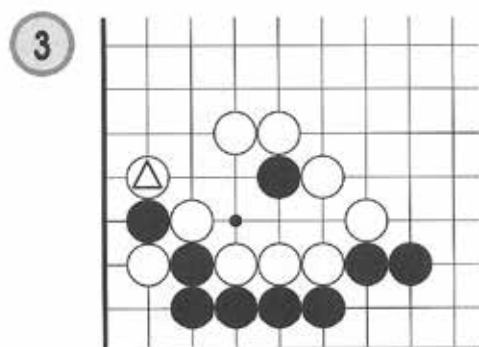
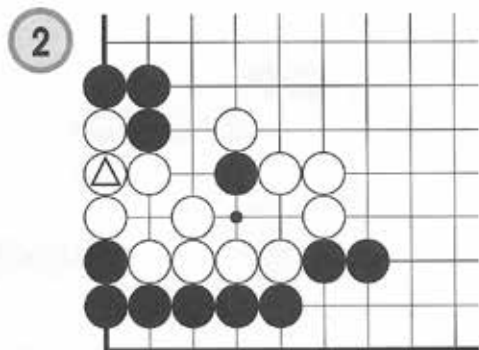
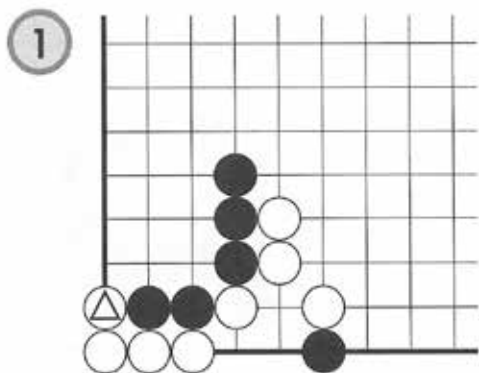


Dia.4 A is the important area for both players.

1

7. Snapback after Dansu (Atari)

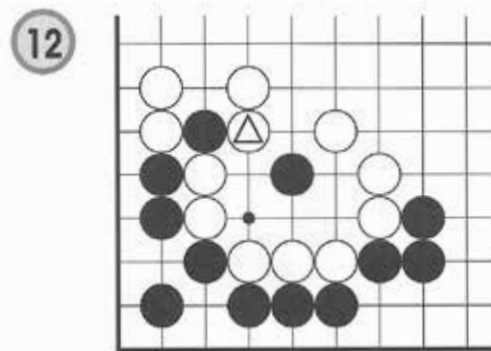
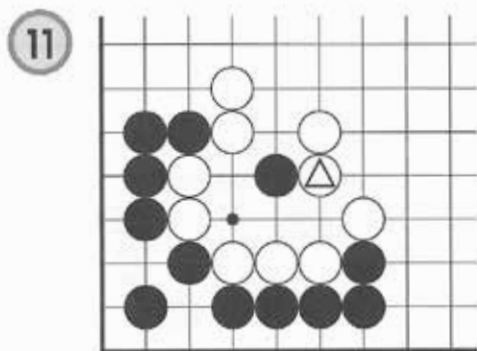
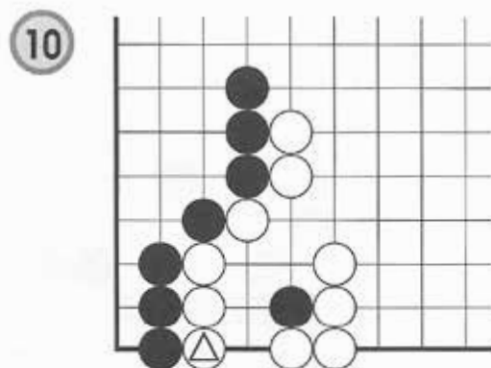
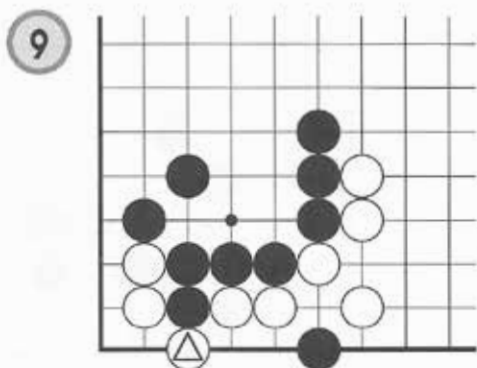
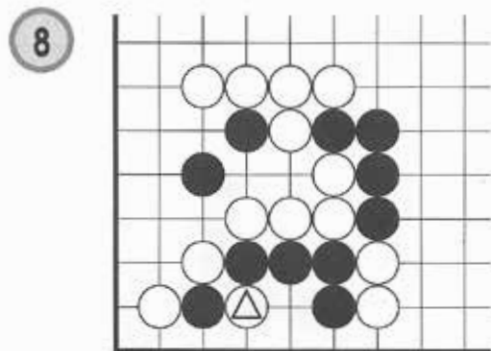
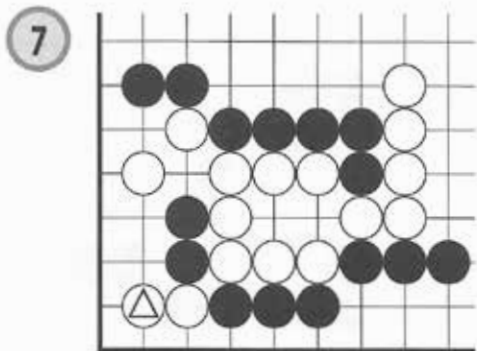
The marked stone has just been played, Capture some White stone(s) with a snapback after playing dansu! (Indicate three moves.)



1

7. Snapback after Dansu (Atari)

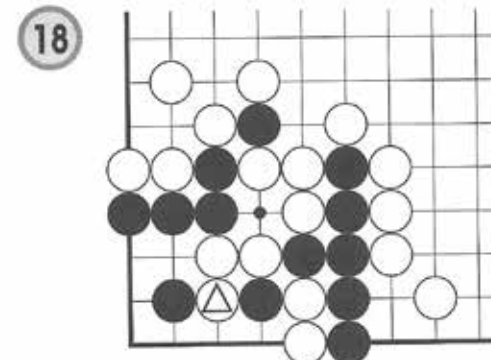
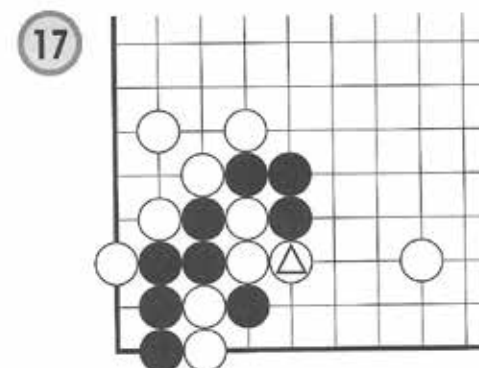
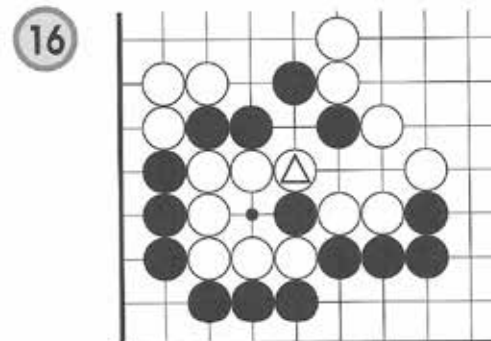
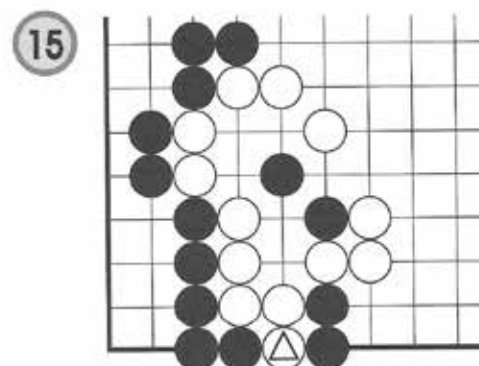
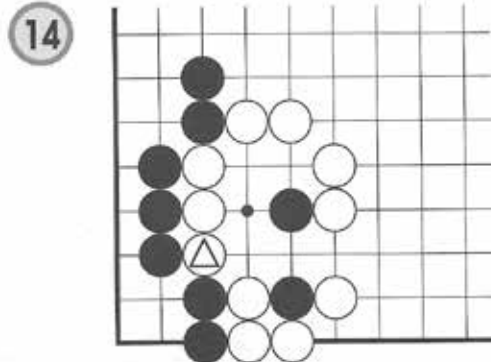
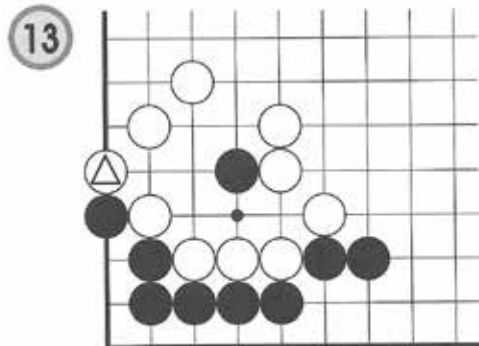
The marked stone has just been played. Capture some White stone(s) with a snapback after playing dansu! (Indicate three moves.)



1

7. Snapback after Dansu (Atari)

The marked stone has just been played, Capture some White stone(s) with a snapback after playing dansu! (Indicate three moves.)

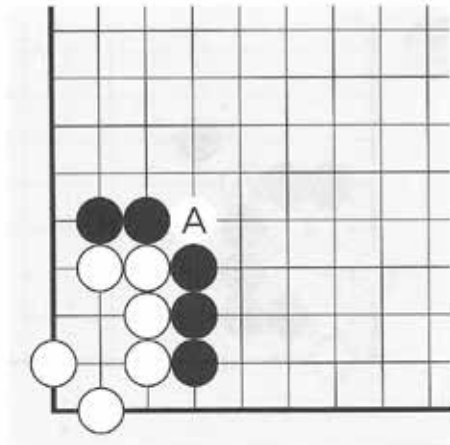


2. Connection

Connection is very important. Let's study the types of connections and where to connect!

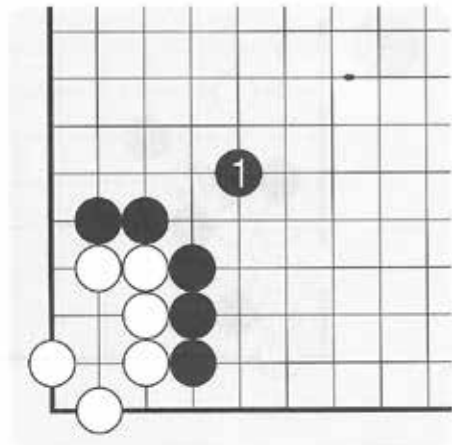
- 2-1. Types of Connections
 - 2-2. Where to Connect?
-

• Dia.1 •



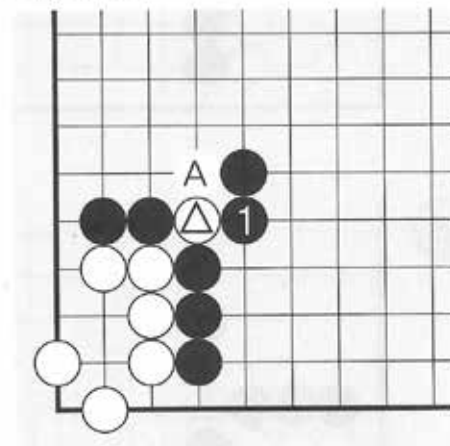
Dia.1 Black has weakness at A.

• Dia.2 •



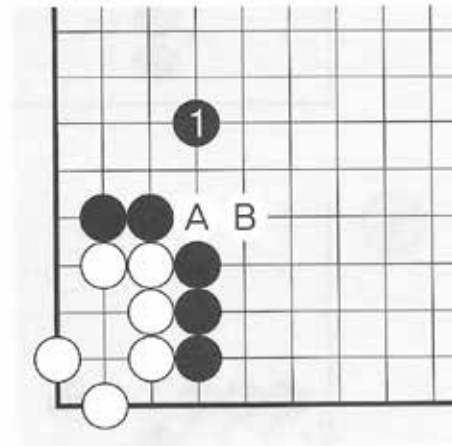
Dia.2 Study this type of Connection.

• Dia.3 •



Dia.3 If White cuts, Black 1 or A captures the stone with a ladder.

• Dia.4 •

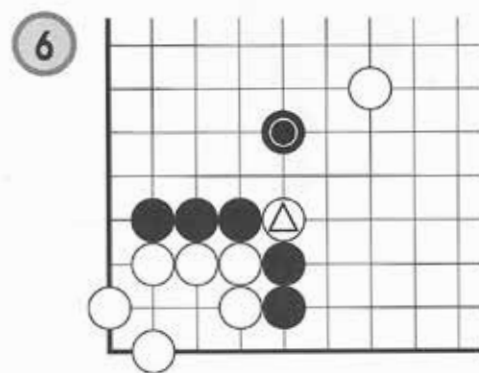
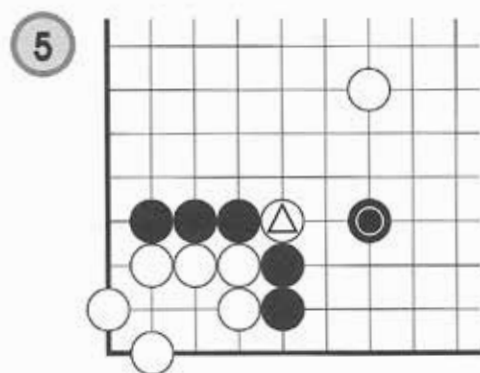
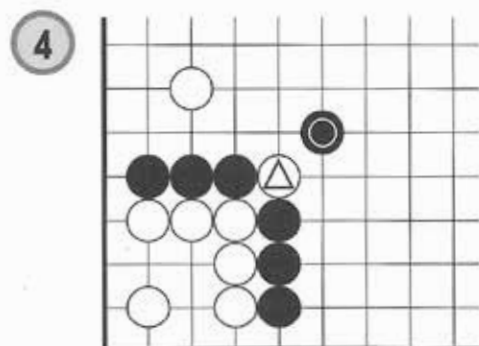
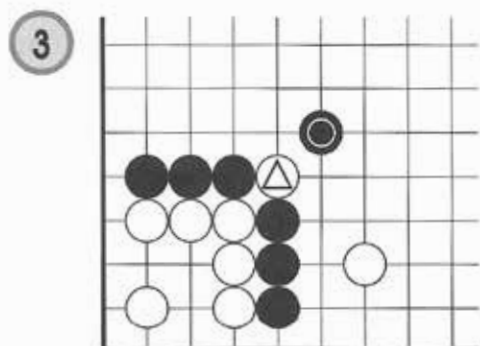
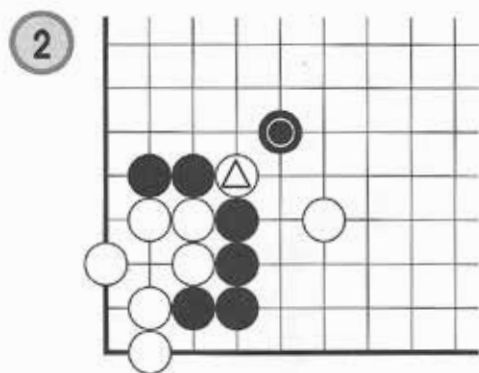
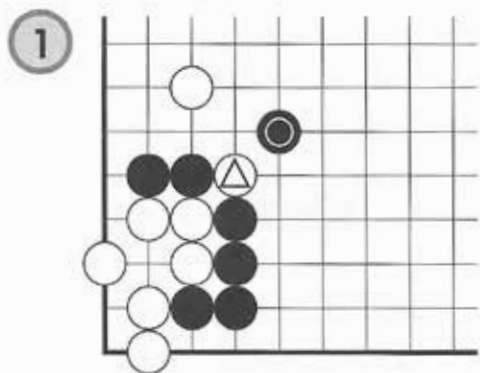


Dia.4 Black 1 is also a possible connection. If White cuts with A, White captures the stone with B.

2

1. Types of Connections

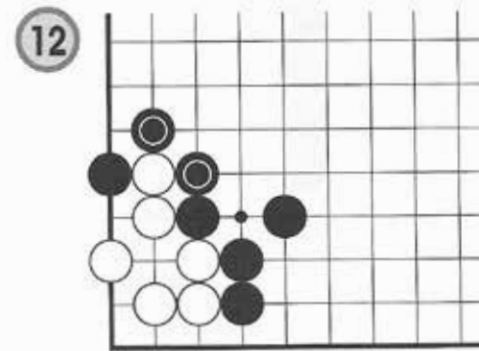
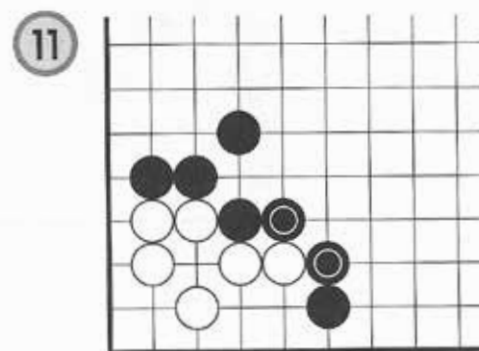
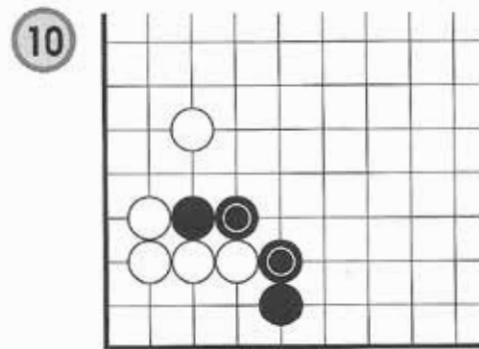
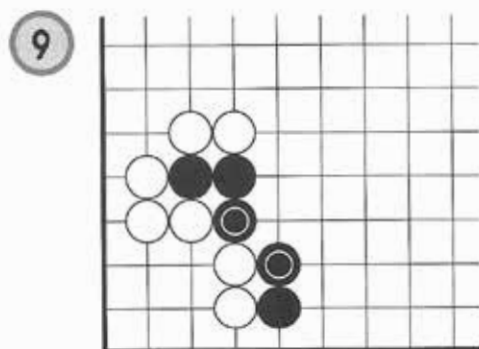
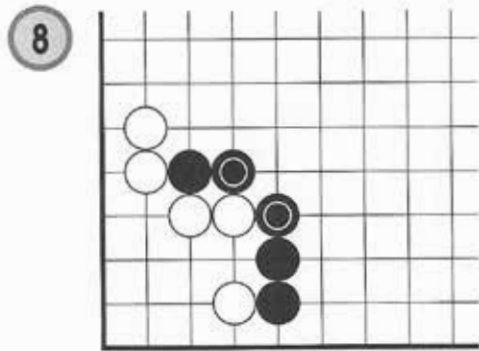
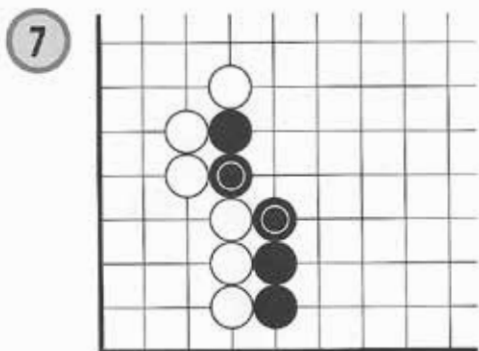
White has just cut at the marked stone. Capture the stone cut by making full use of the marked Black stone! (Indicate three moves.)



2

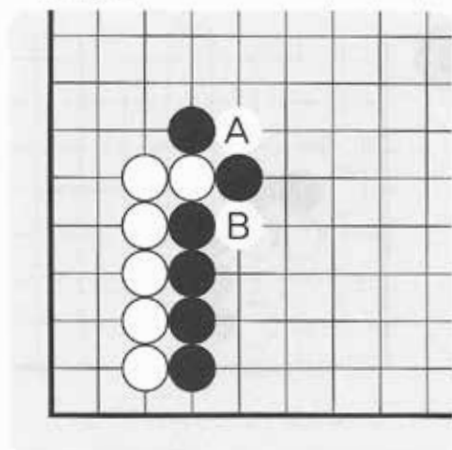
1. Types of Connections

Choose the most effective connection for Black in this situation!



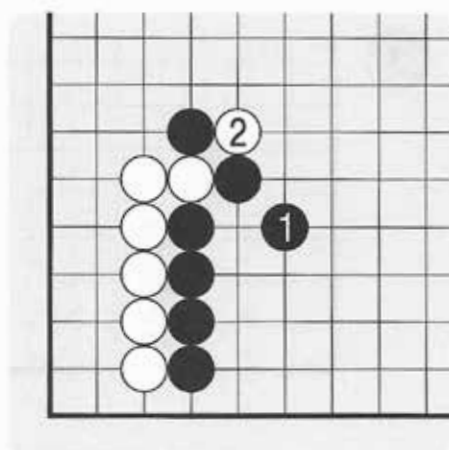
2-2 Where to Connect?

• Dia.1 •



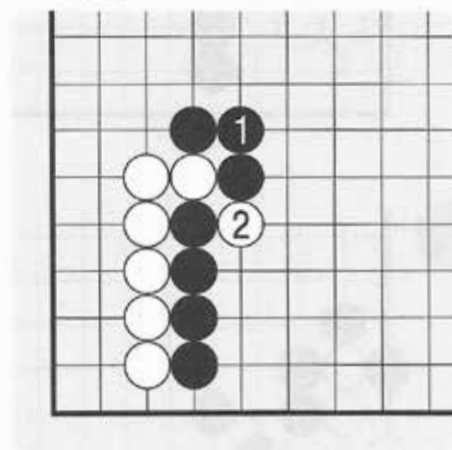
Dia.1 Black has two weak points at A and B. Where to connect?

• Dia.2 •



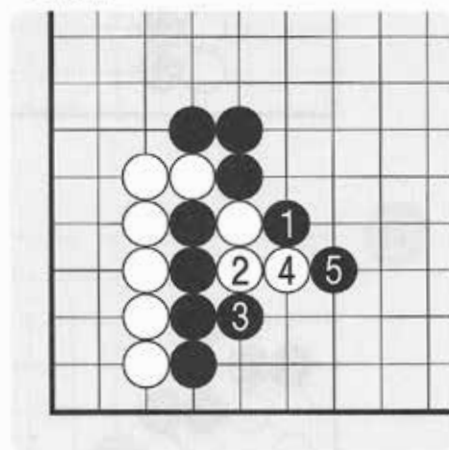
Dia.2 Black 1 is not good. White can cut at 2.

• Dia.3 •



Dia.3 Black 1 is correct here. If White cuts at 2,

• Dia.4 •



Dia.4 Up to Black 5, Black can capture the White chain with a ladder.

2

2. Where to Connect?

Tick if White A is successful, or cross!

