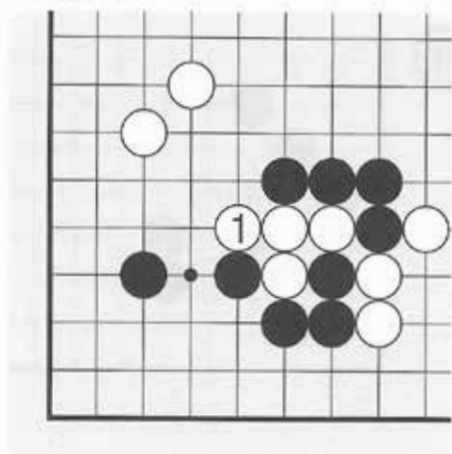


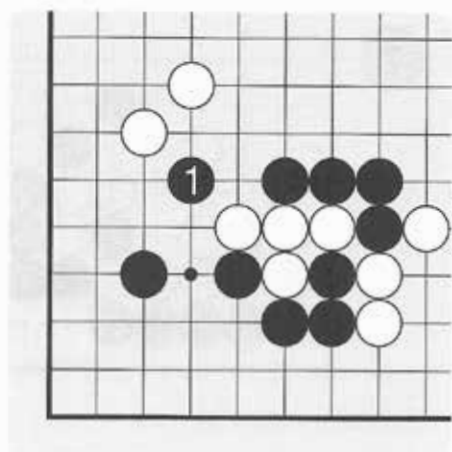
3-2 Hoidori with a Ladder or Net

• Dia.1 •



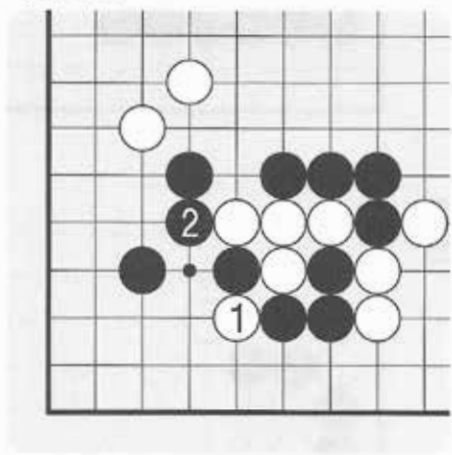
Dia.1 White has just played at 1. Think about Black's methods to capture this White chain!

• Dia.2 •



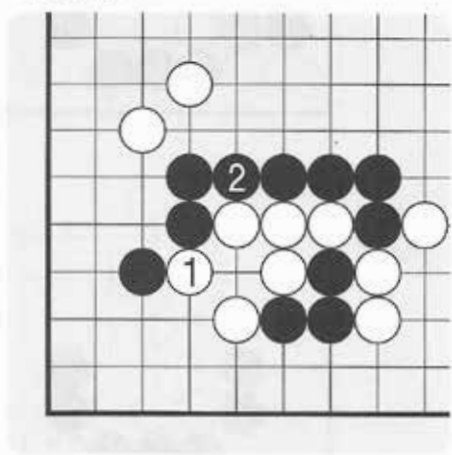
Dia.2 Black's net at 1 is correct here.

• Dia.3 •



Dia.3 Black 2 against White 1 is correct in this situation,

• Dia.4 •

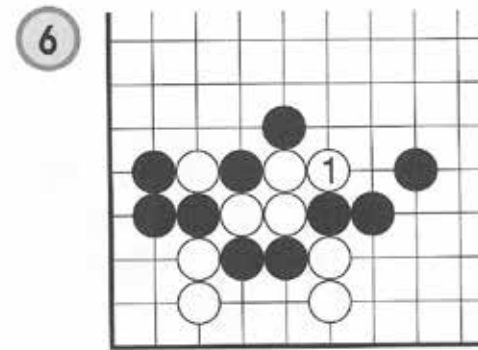
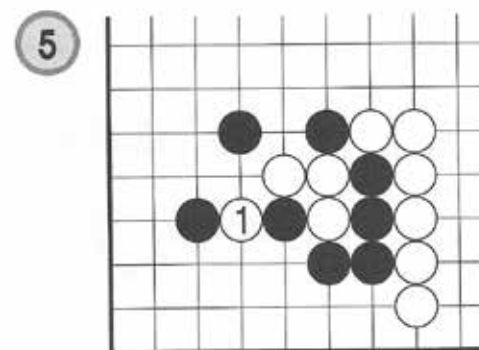
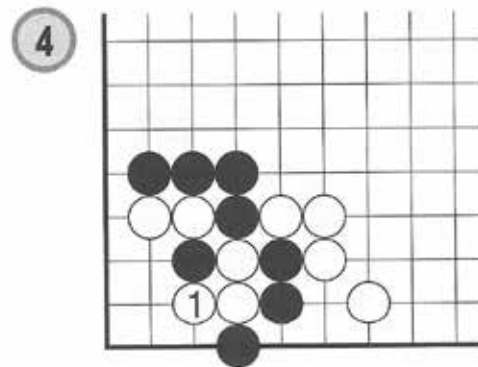
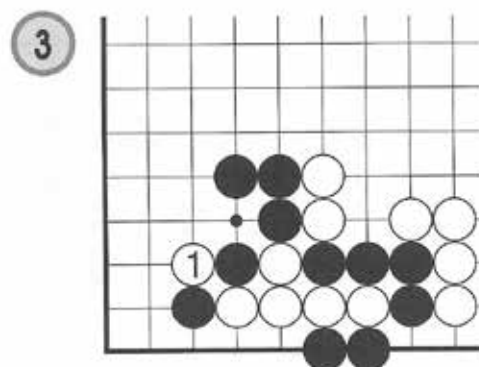
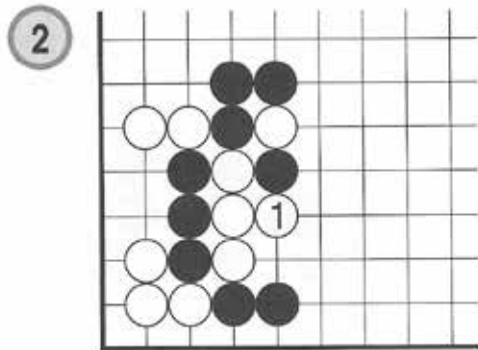
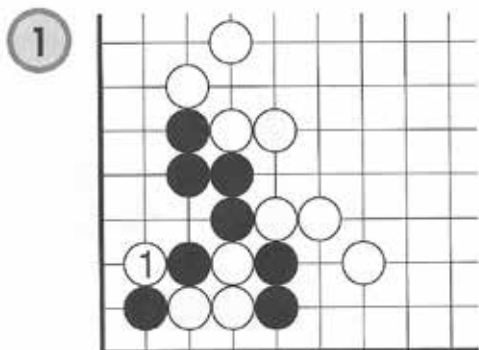


Dia.4 Then, Black 2 captures the White chain with a ladder/hoidori.

3

2. Hoidori with a Ladder or Net

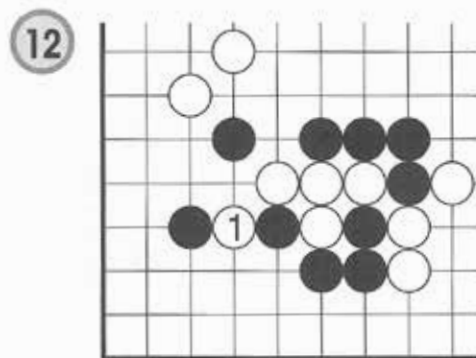
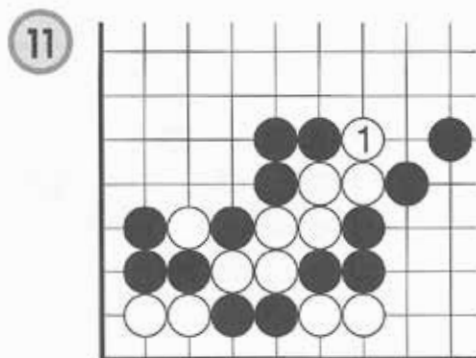
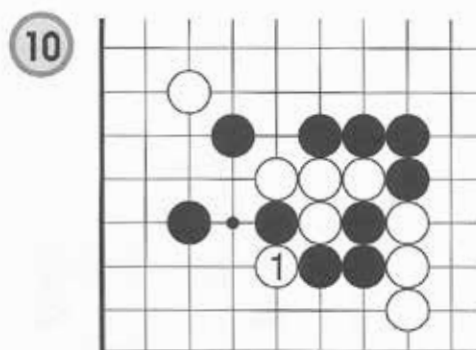
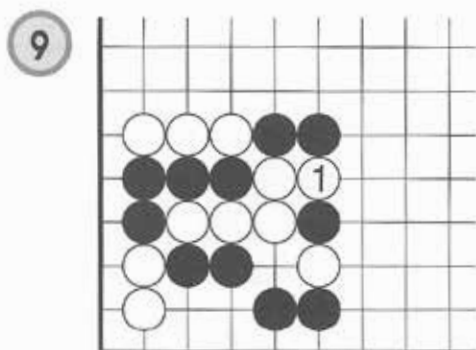
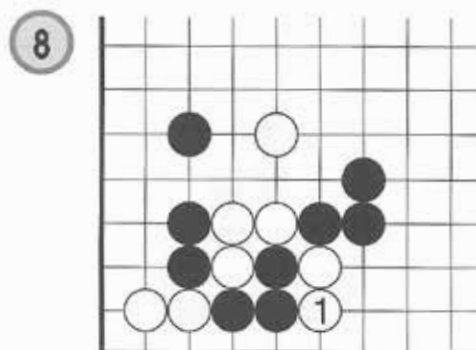
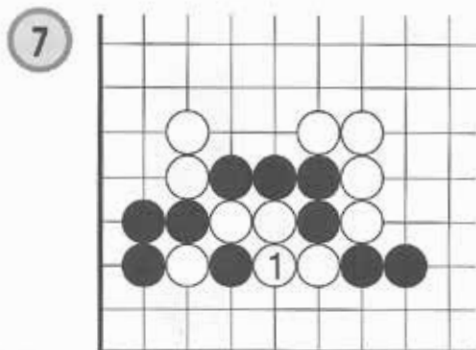
White has just played at 1. Capture the White chain with Hoidori /Oiotoshi! (Indicate five moves!)



3

2. Hoidori with a Ladder or Net

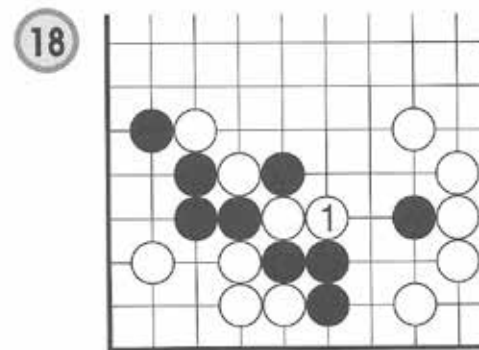
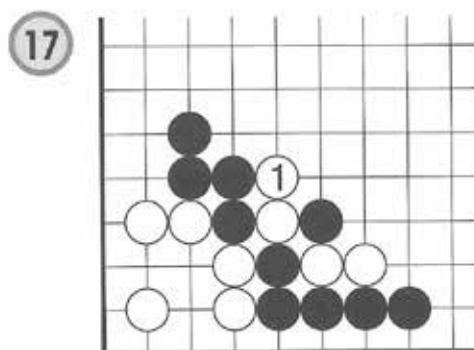
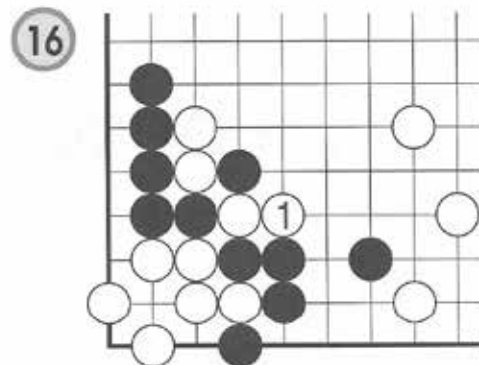
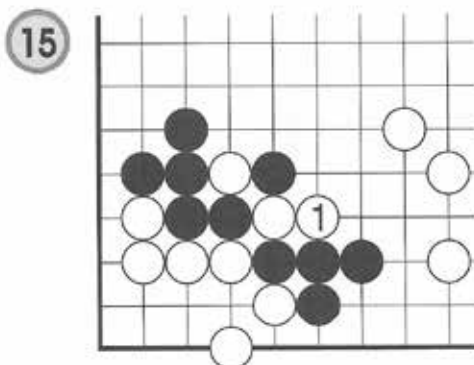
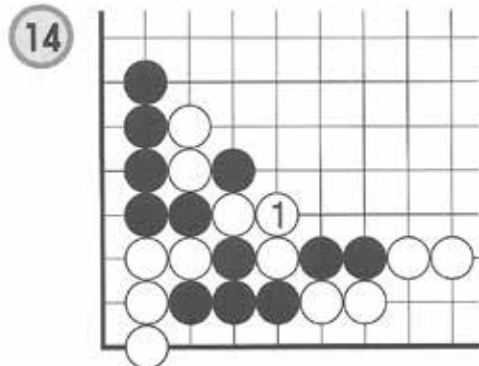
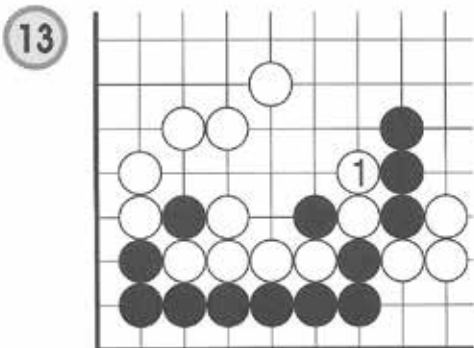
White has just played at 1. Capture the White chain with Hoidori /Oiotoshi! (Indicate five moves!)



3

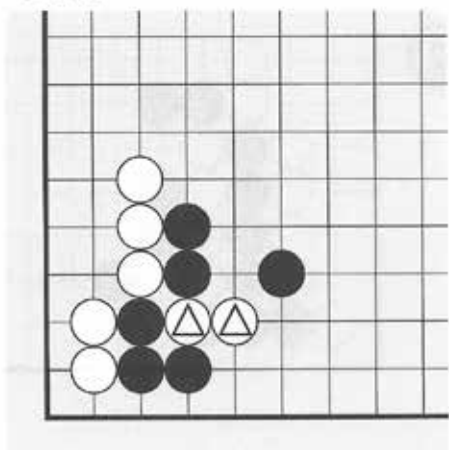
2. Hoidori with a Ladder or Net

White has just played at 1. Capture the White chain with Hoidori after a net! (Indicate five moves!)



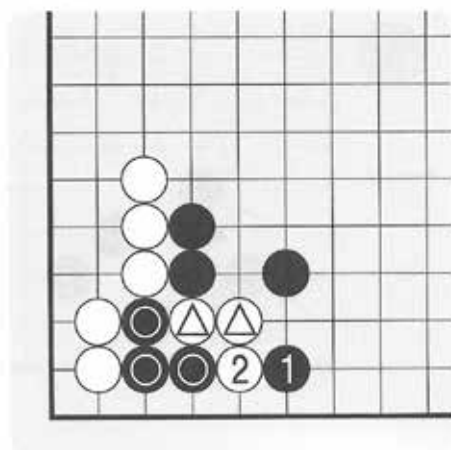
4. Loose Ladder

• Dia.1 •



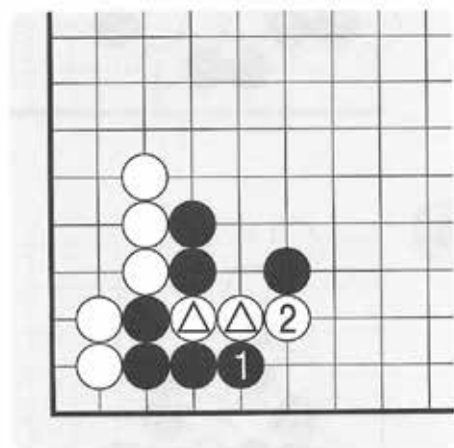
Dia.1 Think about Black's methods to capture the marked White chain!

• Dia.2 •



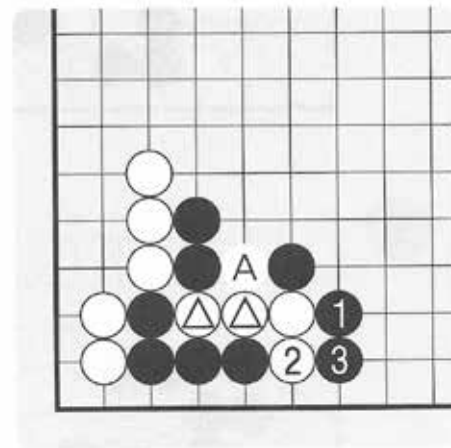
Dia.2 Black 1 is not correct here. After White 2, the marked Black chain is dead.

• Dia.3 •



Dia.3 Black 1 is correct in this situation.

• Dia.4 •

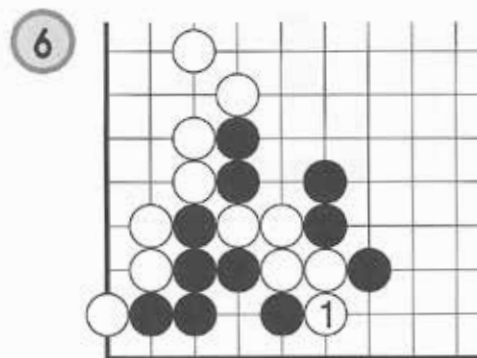
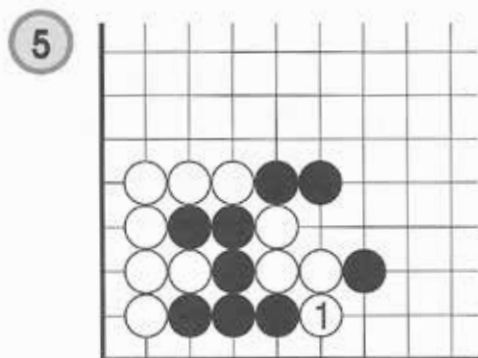
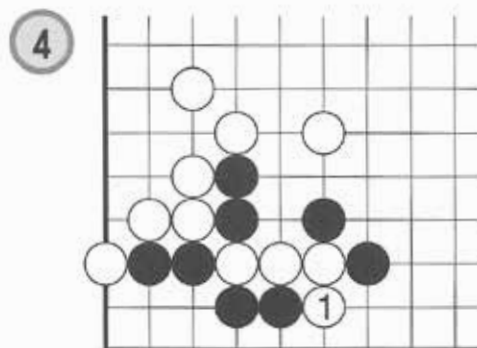
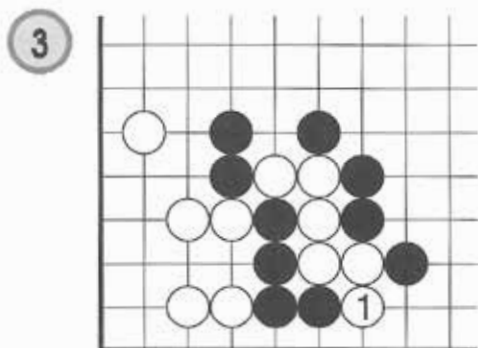
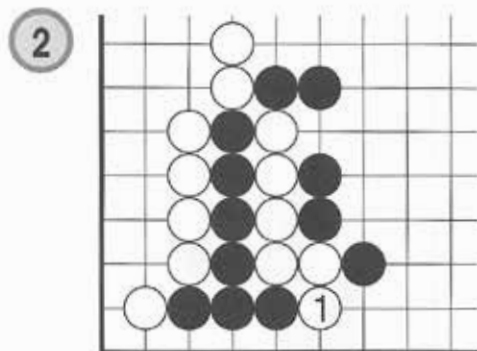
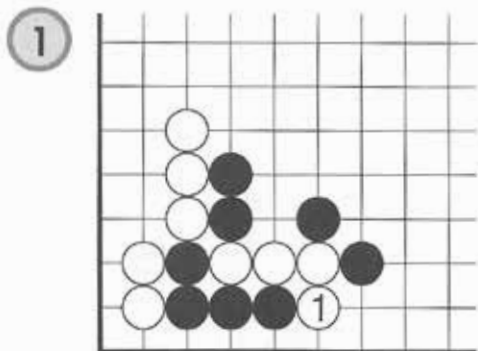


Dia.1 Then, Black 1, 3 capture the White chain with a loose ladder even if there is no Black stone at A.

4

Loose Ladder

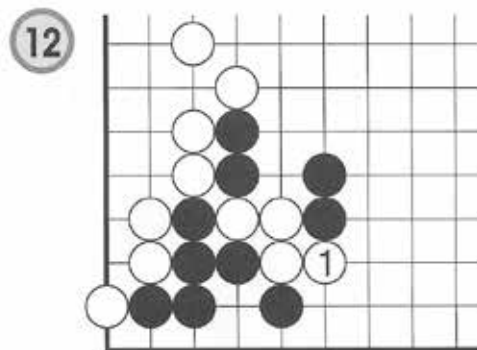
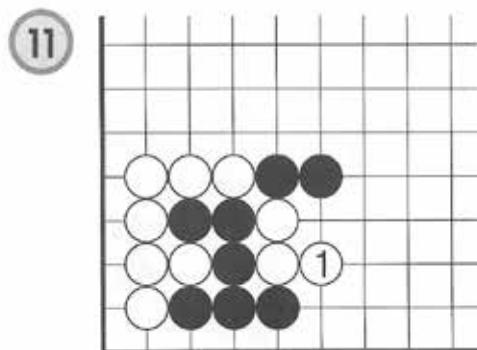
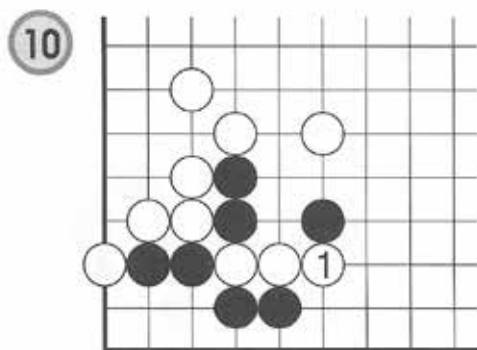
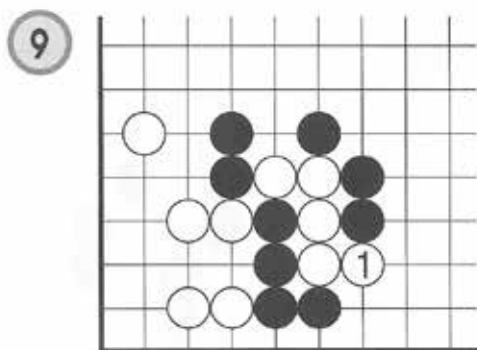
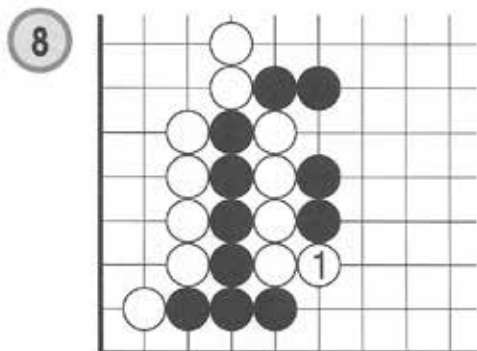
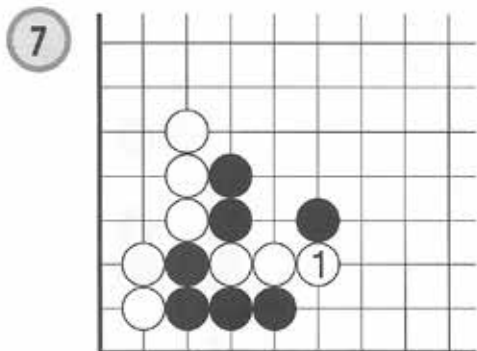
White 1 has just been played. Capture the White chain! (Indicate one move!)



4

Loose Ladder

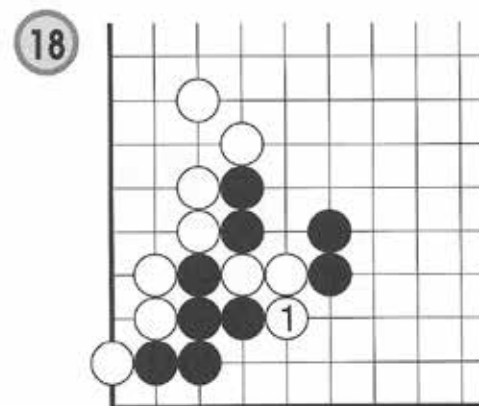
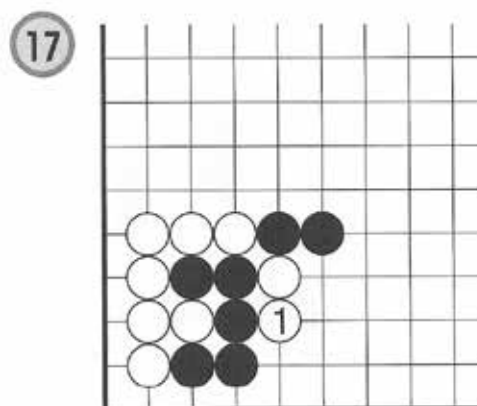
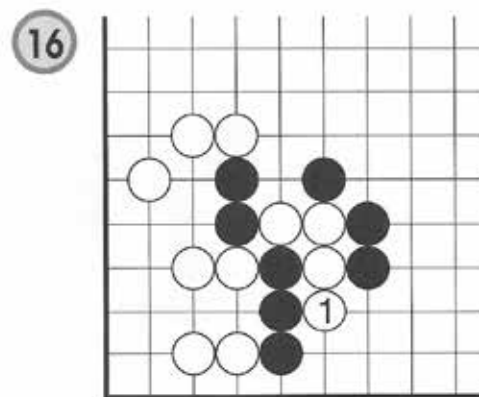
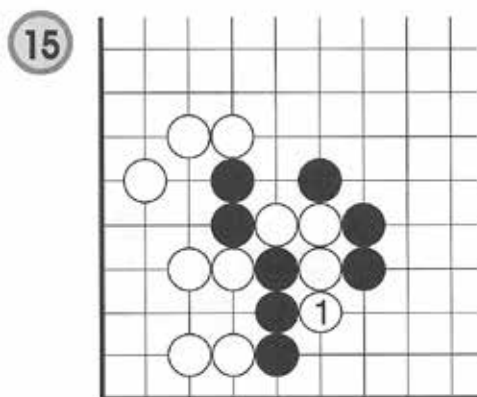
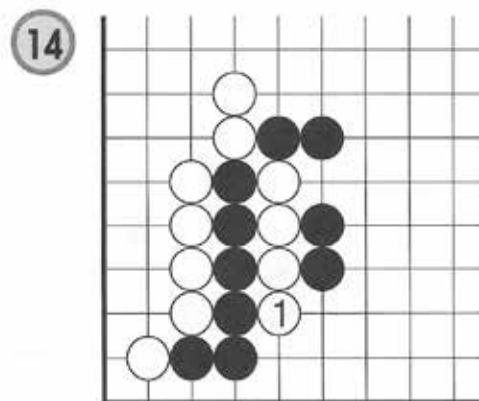
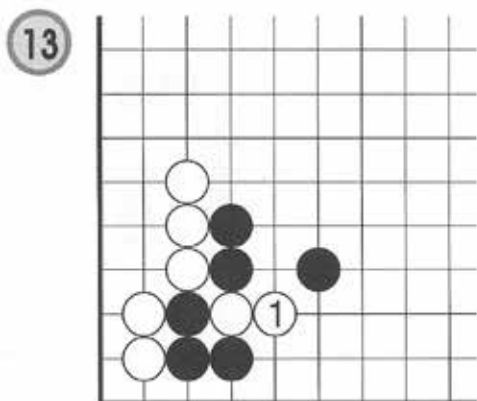
White 1 has just been played. Capture the White chain! (Indicate three moves!)



4

Loose Ladder

White 1 has just been played. Capture the White chain! (Indicate three moves!)



4

Loose Ladder

White 1 has just been played. Capture the White chain! (Indicate three moves!)

